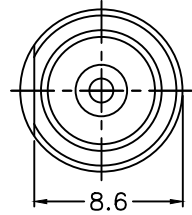
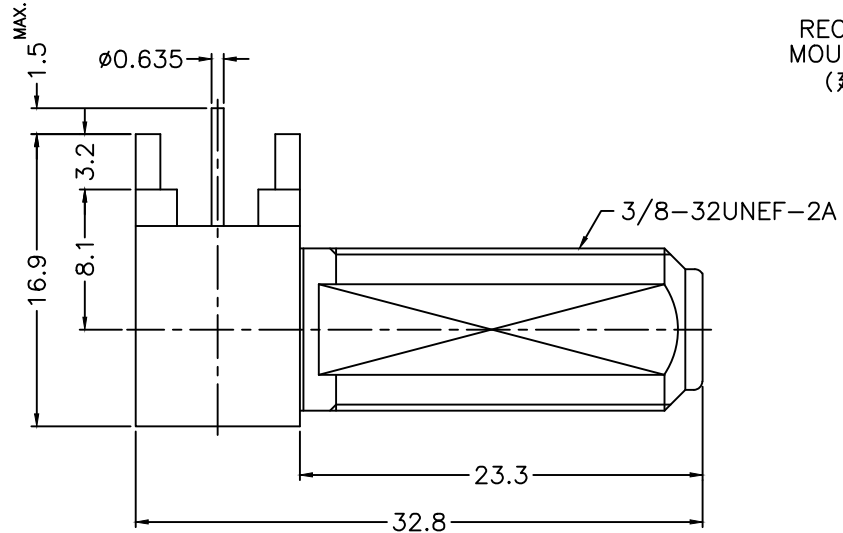
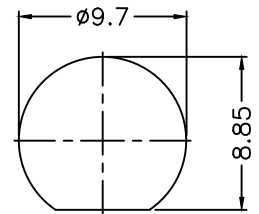
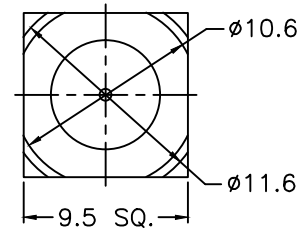
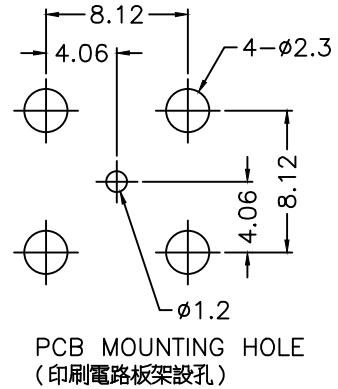


1 2 3 4 5 6 7 8

REVISIONS		
ISS	ZONE	DESCRIPTION\PER REQUEST\DATE
F	C-4	NO.5 WAS CHANGED\RD-DM990914001\09-14-'10
F1	D-2	1.5 MAX. WAS 2.4 MAX.\N/A\07-01-'11
G	A-2	NO.1, 2, 3, 6, 7'S DRAWING NO. WERE CHANGED AND ADDED REMARK 2\RD-DM010601004\06-01-'12

REMARK: 1. RECOMMENDED MATING TORQUE: 15 in/lbs MAX.
2. PANEL THICKNESS=1.6mm MIN.



NOTES: FINISH (PLATING THICKNESS IN MICRO-INCHES)
1. BRASS
2. NICKEL PL. 100 MIN. THICK OVER COPPER PL. 50 MIN. THICK
3. BRIGHT TIN PL. 100 MIN. THICK OVER NICKEL PL. 50 MIN. THICK OVER COPPER PL. 100 MIN. THICK
4. TEFLON

NO.	DESCRIPTION	MATERIAL	FINISH	Q'TY	DRAWING NO.
7	INSULATOR	TEFLON	NATURAL	1	3832-6252A3-7T
6	INSULATOR	TEFLON	NATURAL	1	3832-6252A3-6T
5	CONTACT PIN	NOTE 1	NOTE 3	1	3832-6252A3-5
4	CONTACT PIN	NOTE 1	NOTE 3	1	SH-F81-200-PIN
3	INSULATOR	NOTE 4	NATURAL	2	3832-6252A3-3T
2	BODY	NOTE 1	NOTE 2	1	3832-6252A3-2
1	HOUSING	NOTE 1	NOTE 2	1	3832-6252A3-1

DIMENSIONS ARE IN MILLIMETERS
UNLESS OTHERWISE SPECIFIED TOLERANCES
0.5-6 = ±0.2
6-30 = ±0.4
30-120 = ±0.6
120-315 = ±1
315-1000 = ±1.6
1000-2000 = ±2.4

PART NO.	
APPROVED	DATE 06-01-'12
CHECKED	DATE 06-01-'12
DRAWN	DATE 06-01-'12

G.L.I.	
TITLE	F R/A CONNECTOR
DRAWING NO.	3832-6252A3-75
FILE NO.	R:\D\G\DWG\3832\6252A3\75

1 2 3 4 5 6 7 8